



GAT MONTHLY MEMBERSHIP PROGRESS REPORT

Results as of: 12/31/2023

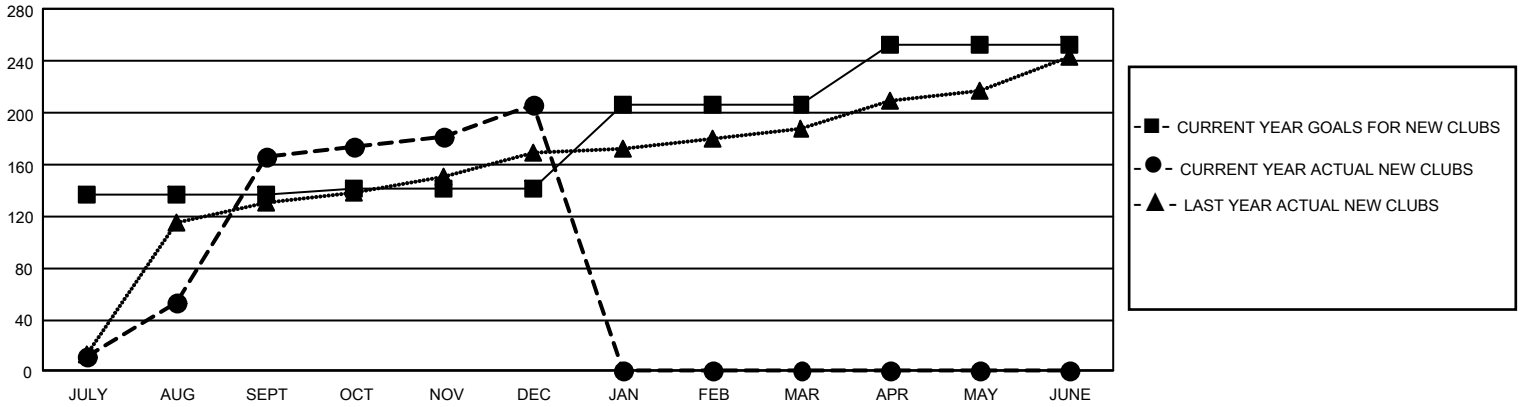
GMT Constitutional Area 6 - S, Group C

REPORT DOES NOT INCLUDE CLUBS IN UNDISTRICTED AREAS.

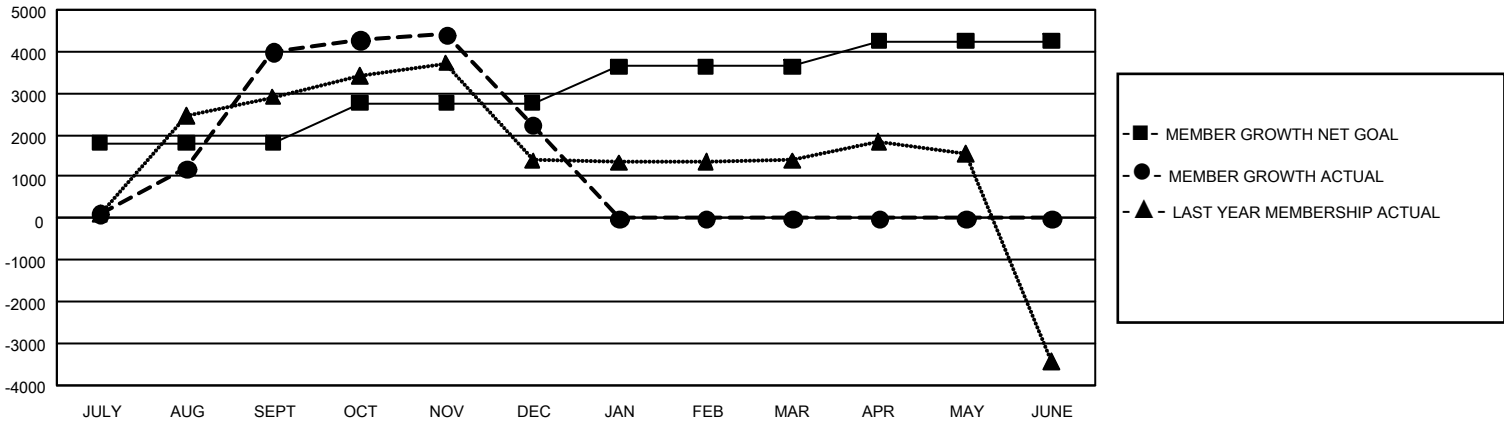
Clubs			
RESULTS FOR 2023-2024			
QUARTER	NEW CLUB GOAL	NEW CLUBS	DROPPED CLUBS
JULY/AUG/SEPT	408	166	36
OCT/NOV/DEC	15	41	120
JAN/FEB/MAR	195	0	0
APR/MAY/JUNE	141	0	0

Members			
RESULTS FOR 2023-2024			
QUARTER	MEMBER GROWTH NET GOAL	MEMBER GROWTH ACTUAL	DROPPED MEMBERS ACTUAL (including transfers)
JULY/AUG/SEPT	1804	6,399	2,198
OCT/NOV/DEC	957	2,537	4,218
JAN/FEB/MAR	879	0	0
APR/MAY/JUNE	615	0	0

GOALS AND ACTUAL NEW CLUBS CUMULATIVE



GOALS AND ACTUAL MEMBERS CUMULATIVE



DROPPED CLUBS: 156	1,119 CLUBS OF 2,045 ADDED 1 OR MORE NEW MEMBERS	GENDER DISTRIBUTION	
		MALE 29,288 (68.77%) FEMALE 13,274 (31.17%) NON BINARY 2 (0.00%) PREFER NOT TO ANSWER 26 (0.06%)	
DROPPED MEMBERS		CLICK HERE FOR CUMULATIVE MEMBERSHIP DATA	
DECEASED 26 CLUB CANCELLED 2,336 OTHER 4,054 TOTAL 6,416	TOTAL FAMILY UNIT MEMBERS 30,950 FAMILY MEMBERS PAYING HALF DUES 21,627		